

SPPI for Human Health Activities in Finland

29th Voorburg Group Meeting
Dublin, September 2014

Susanna Tåg
Statistics Finland

OUTLINE

- Background
- Market Conditions
- Definition of the Service
- Pricing Methods
- Results



Background

- Finnish SPPI does not cover in full the whole division for human health activities. Groups included are:
 - 86.22 Specialist medical practice activities and
 - 86.90 Other human health activities

- BtoB-perspective because of the EU regulation:
 - i) Occupational health care services and
 - ii) Diagnostic imaging and laboratory examination services offered to enterprises

“INDEX FOR OCCUPATIONAL HEALTH CARE SERVICES”

Market Conditions (1/3)

- Health services - public and private service production - account for around 5 % of GDP (~8 % of service sector GDP; private sector's share of the total health care service production is approximately 23 %)
 - NACE 86: turnover EUR 3.6 billion, 15,000 enterprises
- Production is dominated by the public sector: the local government is responsible for the organisation of both basic health care and hospital care services
- Private sector. Especially the production of occupational health care services, but households taken care as well

Market Conditions (2/3)

- The Social Insurance Institution (SII) is the key actor in private health care services
 - SII reimburses to consumers part of the fee of examination or treatment charged by the private doctor or dentist
 - An employer is also entitled to compensation from the SII for the occupational health care services it has organised
 - SII doesn't reimburse the costs of public health care
 - Policy in public health care: the charging shouldn't be an obstacle to seeking the services (a small fee / ceiling for total yearly costs)

Market Conditions (3/3)

TOL2008	Classification	No. of businesses	Turnover (million €)	Share of total turnover
86101	Hospital activities proper	21	171.75	5 %
86102	Rehabilitation centres and nursing homes	19	99.86	3 %
86210	General medical practice activities	9	147.54	4 %
86220	Specialist medical practice activities	5150	1 658.46	46 % ★
86230	Dental practice activities	1766	637.21	18 %
86901	Physiotherapy	2551	270.39	7 %
86902	Laboratory examinations	57	113.15	3 % ★
86903	Diagnostic imaging examinations	33	21.14	1 % ★
86904	Ambulance service	133	112.87	3 %
86909	Other health care services	5572	406.68	11 % ★

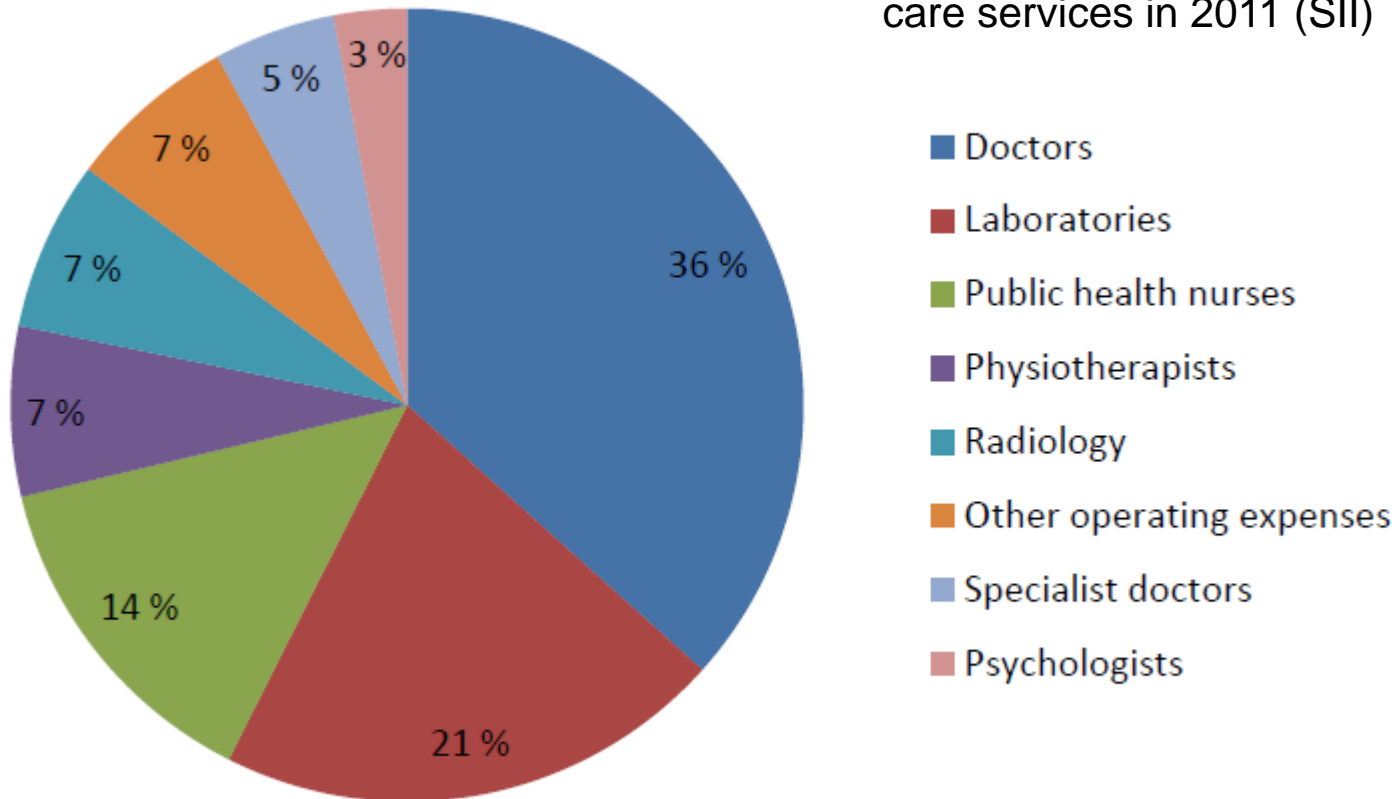
★ = is included in the SPPI

Definition of the Service (1/2)

- Doctor's services, laboratory and diagnostic imaging examinations
 - Excluded: dental services and physiotherapy / not typically included in occupational health services
 - Services purchased by municipalities were left out / their share will be monitored and inclusion reconsidered
 - Not all the clinics produce laboratory services or diagnostic imaging examinations on their own. Enterprises that are specialized in *laboratory services* or *diagnostic imaging services* and offer those services to clinics are included in the index

Definition of the Service (2/2)

The distribution of costs in occupational health care services in 2011 (SII)



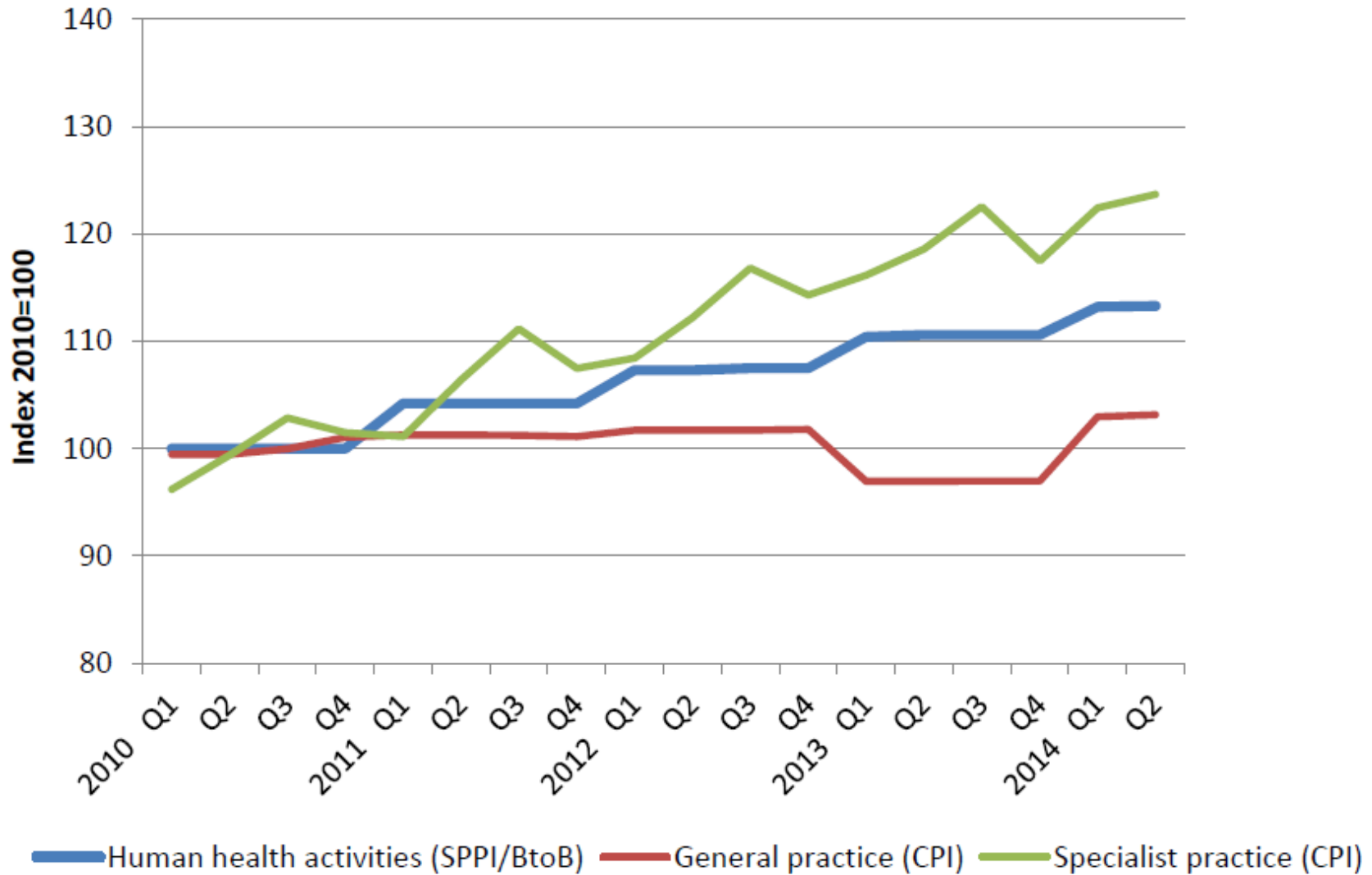
Pricing Methods

- Direct use of prices of repeated services
 - Occupational health care → list price * discount rate type by customer group
 - Laboratory examinations → prices per an individual examination

- Time-based charges
 - Medical practice services

- Alternatively: turnover / visits (or invoice / operations) for strictly specified services and customers

Results



Thank you for your attention!

Questions?

Susanna Tåg
susanna.tag@stat.fi
tel. +358 29 551 2991